

220 H-2

ANDREGG, INC.

SURVEYING • MAPPING • GEOMATICS

STATION DESCRIPTION & SKETCH

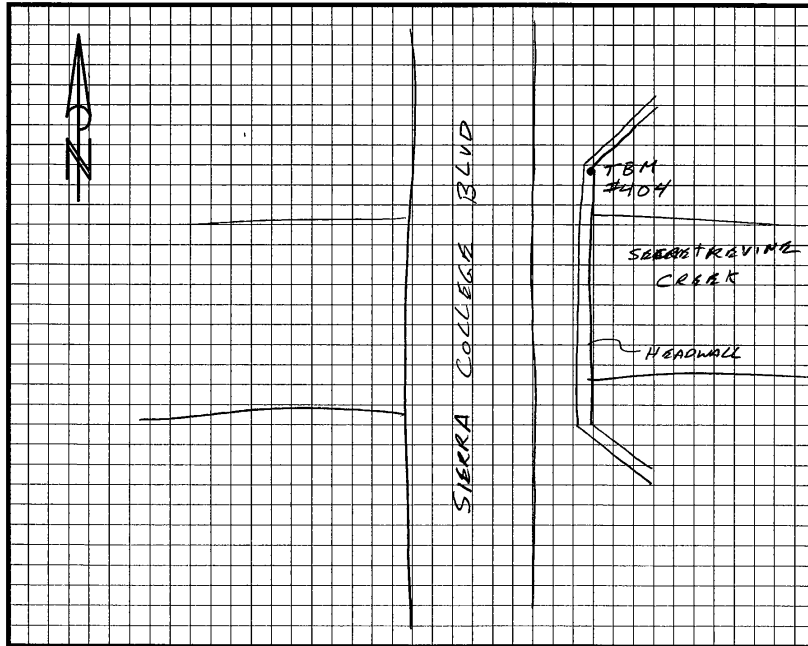
JN 11559-00 - Project Name: City of Rocklin Control Network

QUADRANGLE NAME: Rocklin STATION NAME: TBM 404 (5-3)

Approximate Latitude: 38° 47' 49.59" N Approximate Longitude: 121° 12' 16.07" W

Described by: W. Wilson Date: 12-02-02

To reach the point FROM I-80 EAST BOUND: SIERRA COLLEGE BLVD GO SOUTH ALONG SIERRA COLLEGE 0.3 MILES TO SECRET RAVINE CREEK CROSSING



The point is marked by PK # ANDREGG INC WASHER and is 5'± ^{SURFACE OF THE RD} BELOW the ground:
 PK # WASHER @ N ANGLE POINT IN HEADWALL 25'± EAST OF
 ⊥ & 5'± LOWER THAN SURFACE OF ROAD

