

ANDREGG, INC.

SURVEYING • MAPPING • GEOMATICS

STATION DESCRIPTION & SKETCH

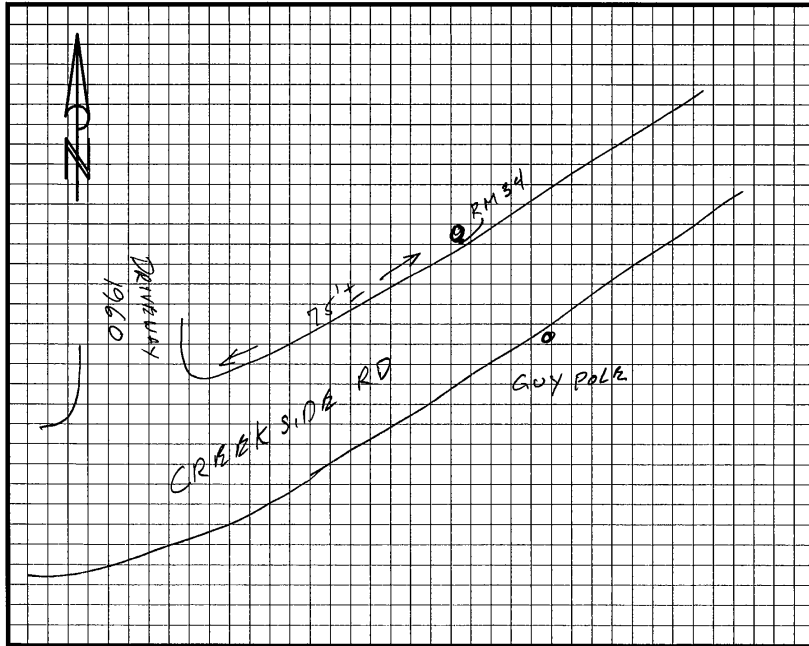
JN 11559-00 - Project Name: City of Rocklin Control Network

QUADRANGLE NAME: ROCKLIN STATION NAME: RM34 (R6.7)

Approximate Latitude: 38°51'15.26" N Approximate Longitude: 121°13'26.36" W

Described by: W. WILSON Date: 12-02-02

To reach the point FROM DRIVEWAY 1960 CREEKSIDE RD NORTHEASTELY
ALONG RD 75'± TO JPN LN LET TAG ON EAST FACE OF POLE 7'±
ABOUT GROUND MARKED "1960"



The point is marked by ANDREGG INC WASHER & NAIL and is 0.5 ABOVE the ground.
WASHER W/ 8 PENNY NAIL IN SOUTH FACE OF JOINT POLE

